

BUFFALO BAG

HANDCRAFTED LEATHER



Mounting instructions for saddlebags to steel frame, Softail and Cruiser bikes



Left:

So that the saddlebag fits firmly to the bike, the bag should be mounted appropriate accurately. Position the bag as shown on the left picture. First pull the lower buckles tightly around the lower frame tube.

Right:

Now flap the whole bag up and mount the upper buckles to the upper frame tube - fix them very tightly, our bags are very resilient. Only this way you can be sure, that the bag wont jiggle around like a lamb tail.



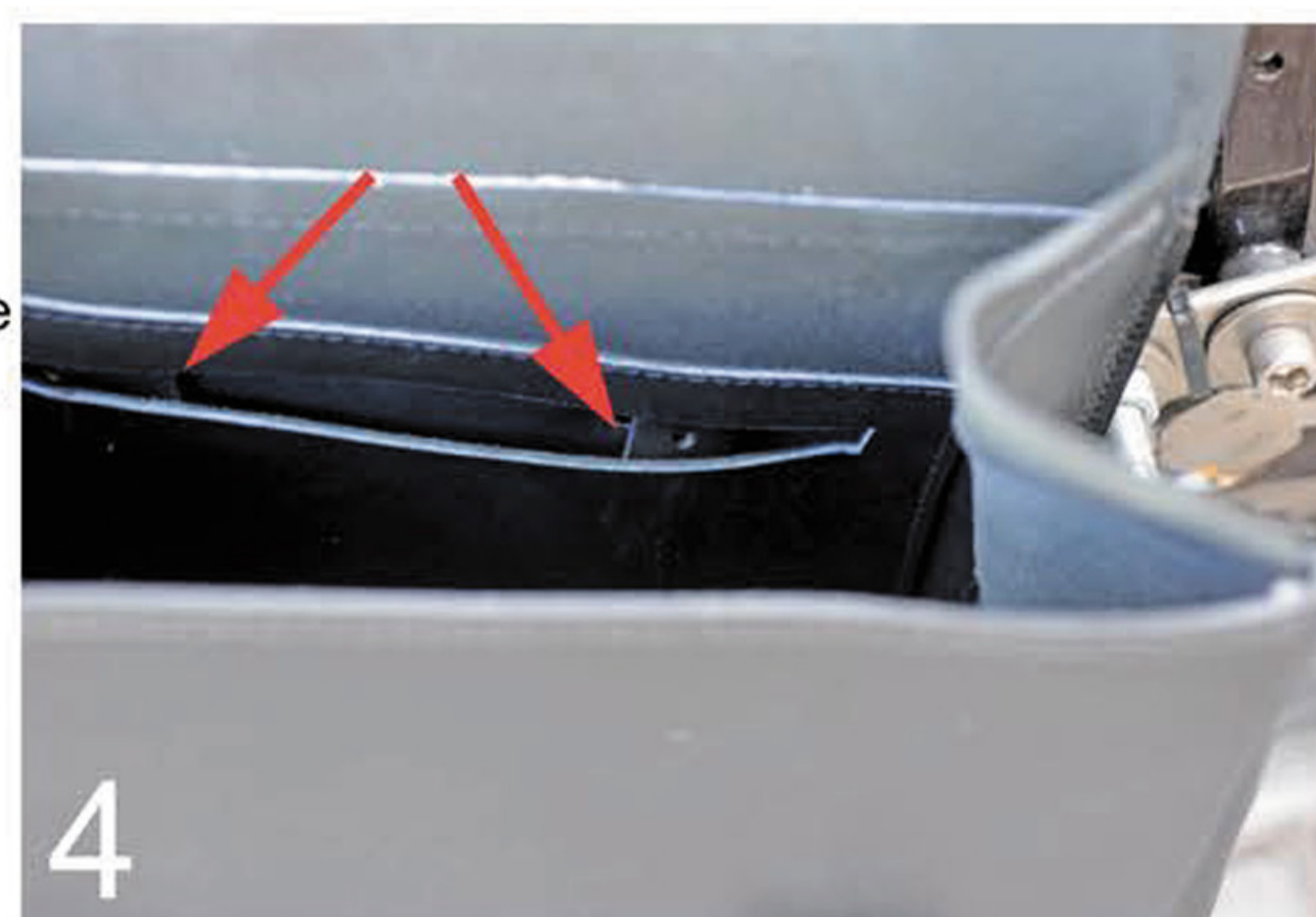
Below:

Pull the straps completely through the buckles and push the ends of the straps through the small gaps at the backside to the inside of the bag.



Right:

The arrows point to the end of the straps, which are covered by the inner pocket in the inside of the bag - so it looks just fine.



Below:

Well, that looks great! Now you can load the bag ad libitum. Important! The bag should be mounted in a way, that it does not grinds on the ground. Check periodically, if the bag still fits firmly. Through wetness the leather straps will give in in the beginning and should then be retightend. For an additional secure fitting, 3 cable retainers are included in the delivery.

Right:

In the end you should push the buckles to the side, so that they are placed discreetly behind the bag.

