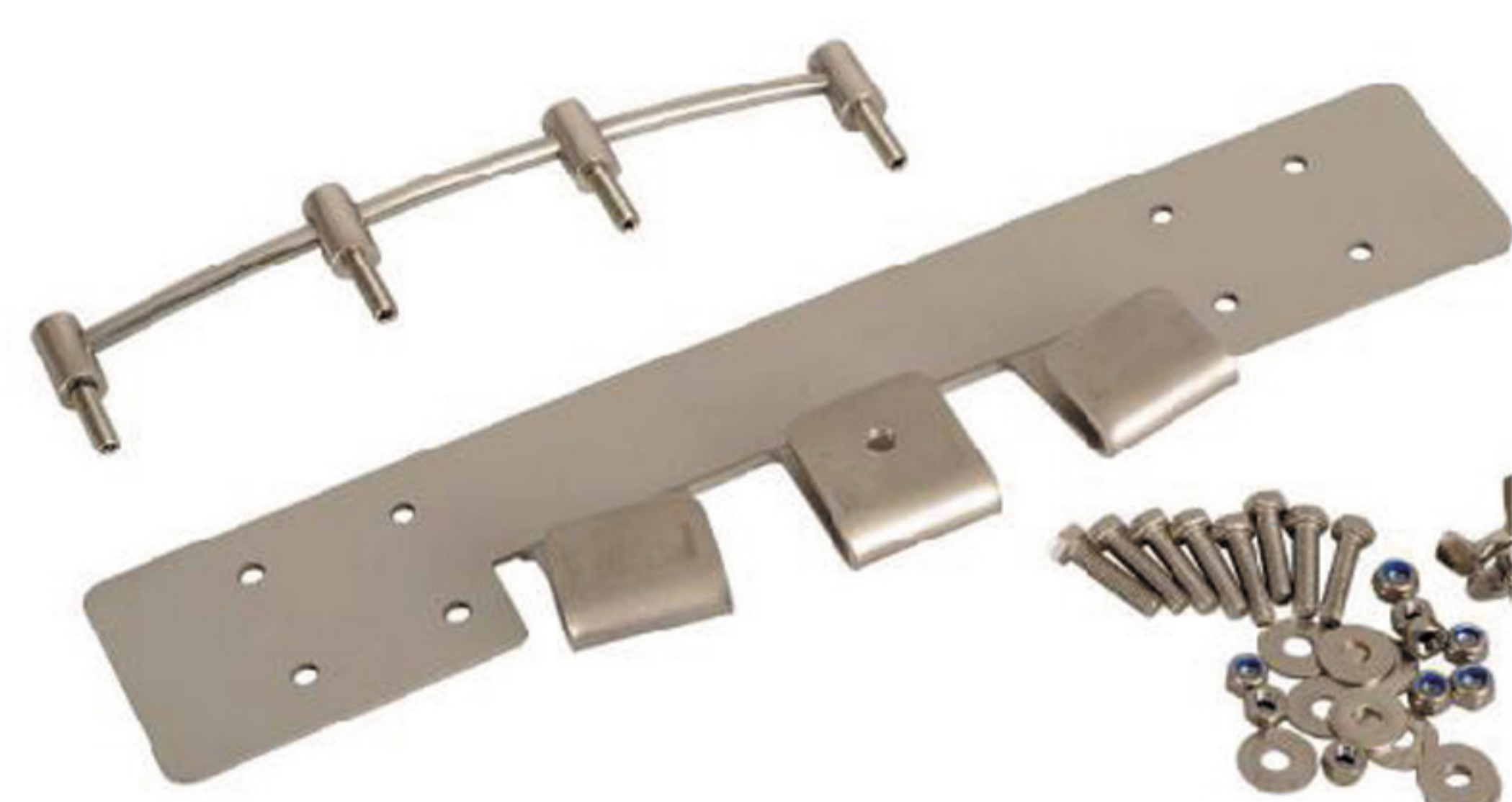


# BUFFALO BAG

HANDCRAFTED LEATHER



## Mounting instructions saddlebag bracket universal



### Scope of supply:

- 1x Saddlebag bracket "Easy Fit"
- 2x Railing
- 1x Butterfly nut
- 8x Hexagon screw 5x20
- 8x Nut 5mm, self-locking
- 16x Washer 5,3mm



### The mounting of our saddlebag bracket is very simple:

A simple retaining plate is hooked onto a beforehand mounted railing to the bike. A safety screw is mounted from the inside of the bag to prevent loss or theft of the saddlebag. The included railing can be mounted freely to your bike. The retaining bracket itself is mounted with eight screws to the bag. Here you can also choose the positioning of the bracket. Our saddlebags have an aluminum plate sewed to the back where you can drill corresponding holes through, which fit the bracket. The position of the plate is palpable and, because of the border seams, clearly visible. At first please hold the saddlebag to your bike, to determine in which position the bag should hang later. You can freely choose the mounting height of the bracket because of the adequate size of the plate. Mark the drill-data with a pen on the backside of the bag, so that the bracket fits probably. Following that just put the bag on the railing and secure it with the safety screw that fixes the bracket to the railing.

