

**MISUTONIDA**  
*italian style accessories* **4x4**



# NISSAN NP300 NAVARA 2016



**45 Min.**

Item Code

**Codice Articolo EC/SB/400/IX**

Référence Article

**GB**

STAINLESS STEEL  
EC APPROVED SUPER BAR

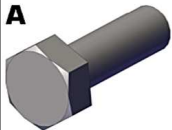


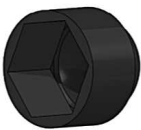
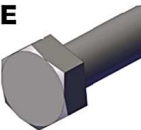

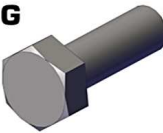







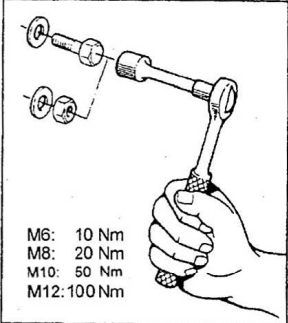





**ITA**

**SUPER BAR OMOLOGATO  
IN ACCIAIO INOX**

**FR**

SUPER BAR HOMOLOGUE  
EN ACCIER INOX

# NISSAN NP300 NAVARA 2016

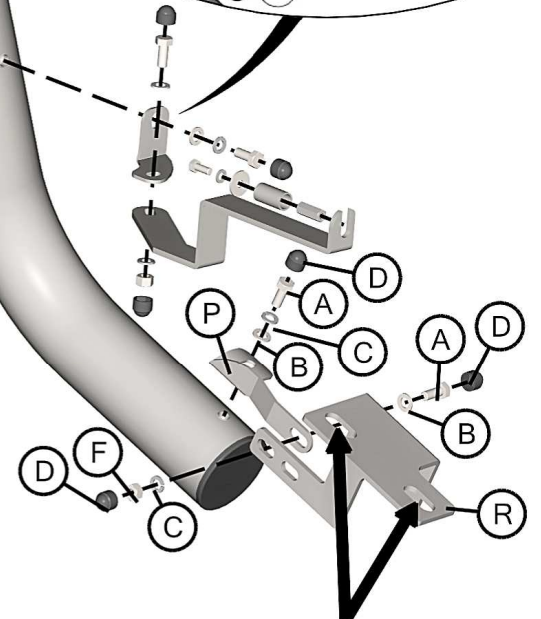
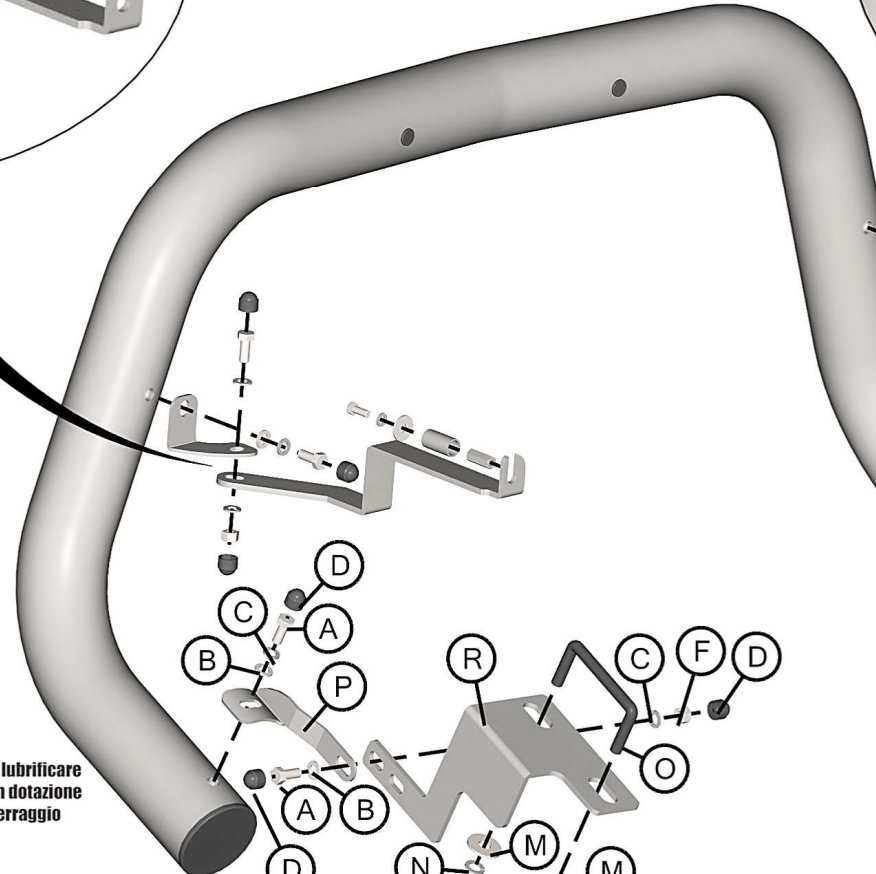
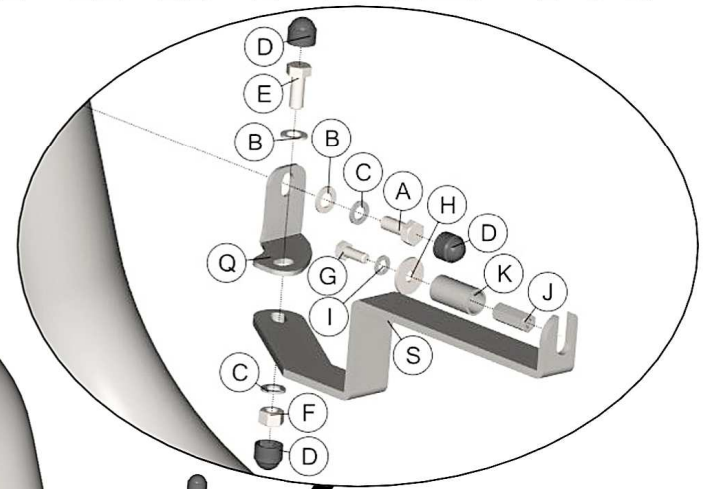
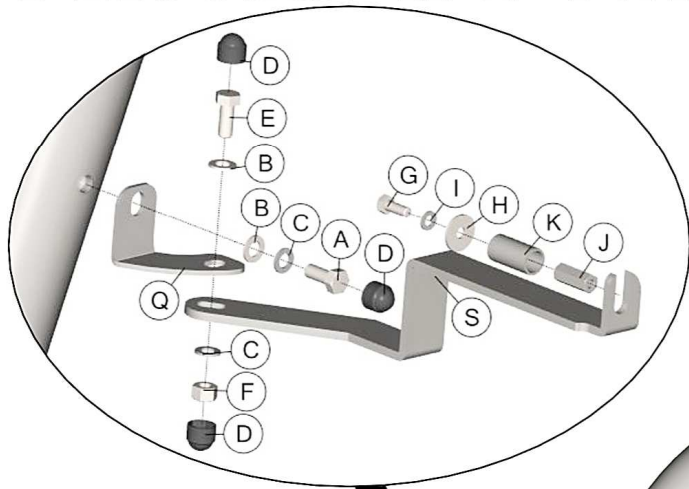
Part List Lista della bulloneria Liste des pièces							
<b>A</b>  TE M8X20 X 6	<b>B</b>  Ø 8 X 8	<b>C</b>  Ø 8 X 8	<b>D</b>  M 8 X 12	<b>E</b>  TE M8X20 WIPLA X 2			
<b>F</b>  M 8 X 4	<b>G</b>  TE M6X16 X 2	<b>H</b>  Ø 6 Big Grandi Grand X 2	<b>I</b>  Ø 6 X 2	<b>J</b>  M6X25 X 2			
<b>K</b>  DISTANZIALE 400 X 2	<b>L</b>  M 10 X 2	<b>M</b>  Ø 10 Big Grandi Grand X 2	<b>N</b>  Ø 10 X 2	 <p>M6: 10 Nm M8: 20 Nm M10: 50 Nm M12: 100 Nm</p>			
<b>O</b>  CAVALLETTA 400 X 1	<b>P</b>  SM/400/A X 2	<b>Q</b>  SB/400/A X 2	<b>R</b>  SMA/400/A X 2				
<b>S</b>  SM/400/B X 2							



Approval mark

**MISUTONIDA**  
italian style  
accessories **4x4**

# NISSAN NP300 NAVARA 2016



Lubricate the set of bolts  
supplied before tightening  
them

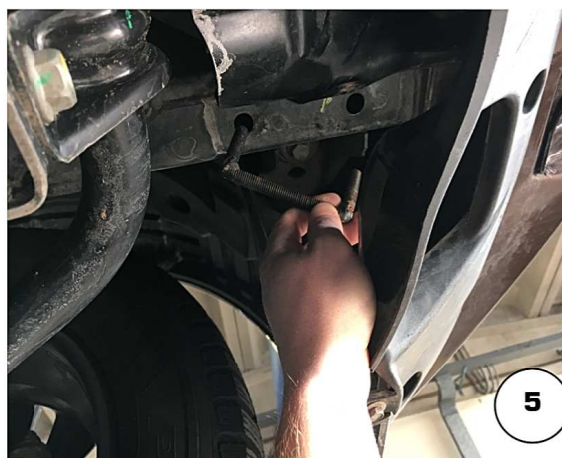
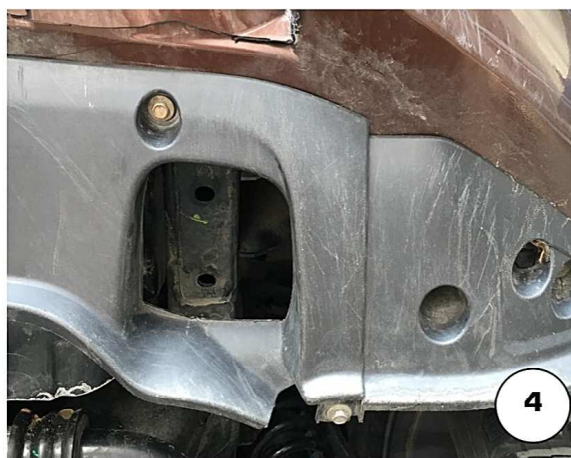
Si consiglia di lubrificare  
la bulloneria in dotazione  
prima del serraggio

Benetzen Sie die Schrauben  
mit Öl, bevor Sie angezogen  
werden

Lubrifier la boulonnerie  
avant de la serrer



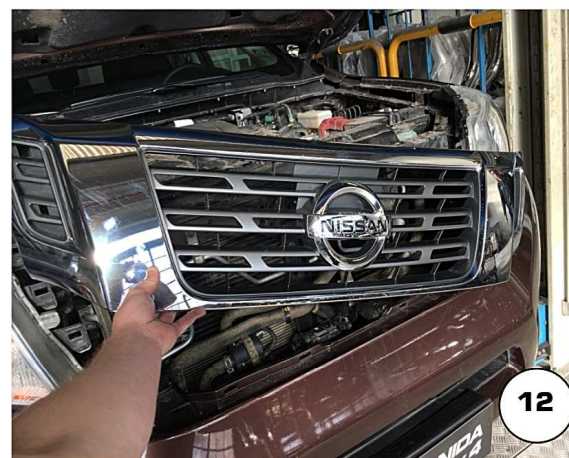
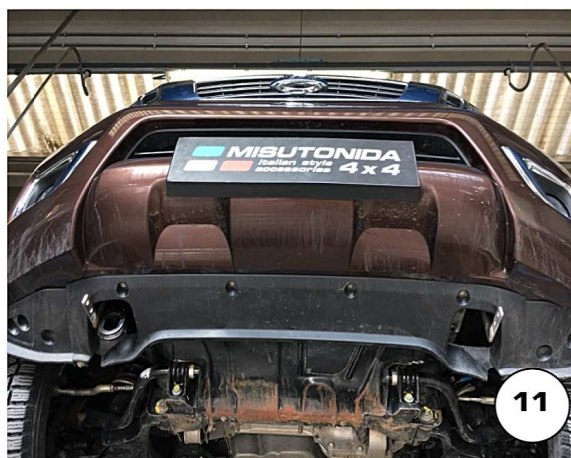
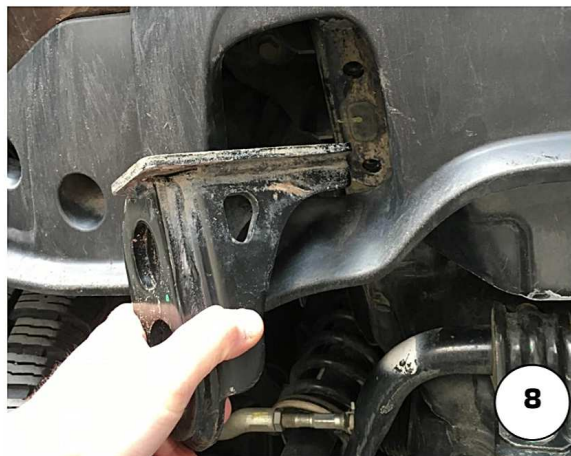
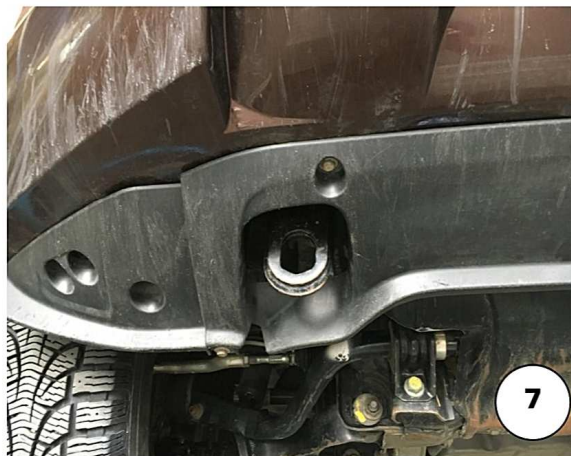
**ORIGINAL SET OF BOLTS  
BULLONERIA ORIGINALE  
BOULONNERIE ORIGINALE**



Date Data Date	Item Code Cod. Articolo Réf. Article	Vehicle model Modello Veicolo Modèle de Voiture
03/02/2016	EC/SB/400/IX	NISSAN NP300 NAVARA 2016

Document checked and approved by  
 Documento controllato ed approvato da  
 Document contrôlé et approuvé par

**BOTTA PIETRO**



Date Data Date	Item Code Cod. Articolo Réf. Article	Vehicle model Modello Veicolo Modèle de Voiture
03/02/2016	EC/SB/400/IX	NISSAN NP300 NAVARA 2016

Document checked and approved by  
 Documento controllato ed approvato da  
 Document contrôlé et approuvé par

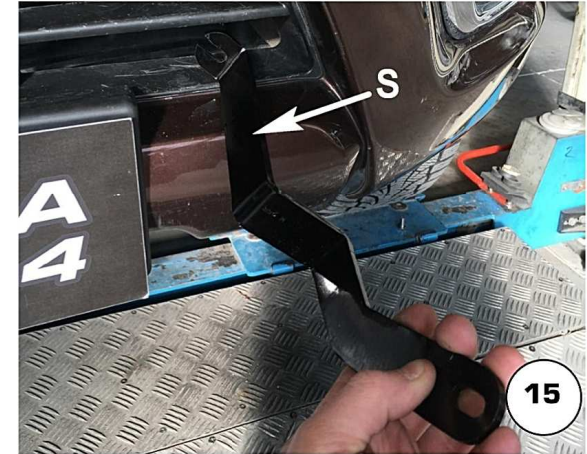
**BOTTA PIETRO**



13



14



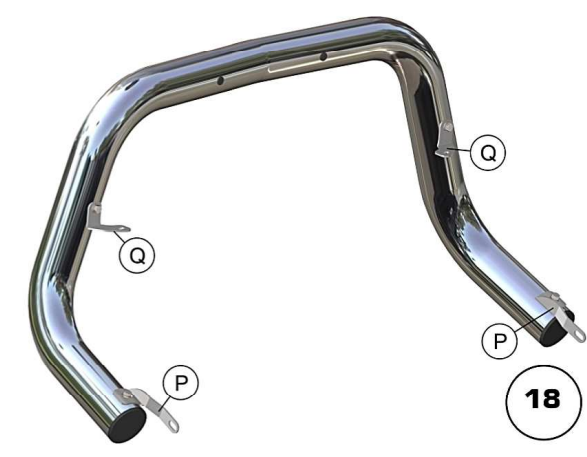
15



16



17



18

Date Data Date	Item Code Cod. Articolo Réf. Article	Vehicle model Modello Veicolo Modèle de Voiture
03/02/2016	EC/SB/400/IX	NISSAN NP300 NAVARA 2016

Document checked and approved by  
 Documento controllato ed approvato da  
 Document contrôlé et approuvé par

**BOTTA PIETRO**



Date Data Date	Item Code Cod. Articolo Réf. Article	Vehicle model Modello Veicolo Modèle de Voiture
03/02/2016	EC/SB/400/IX	NISSAN NP300 NAVARA 2016

Document checked and approved by  
**Documento controllato ed approvato da**  
 Document contrôlé et approuvé par

**BOTTA PIETRO**

**GB****WARNING!**

For the correct operation of the safety shield follow these steps:

1. After the accessory has been installed check the vehicle's computer by turning it on safety shield modus
2. If the indication light is white it means that the safety shield status is OK If the following text pops up: "No sensor indication" it means that the bar needs to be re-positioned as high as possible by adjusting the brackets.

**ITA****ATTENZIONE!**

Per il corretto funzionamento del sistema anticollisione (safety shield) seguire questi passaggi:

1. dopo aver montato l'accessorio controllare il computer di bordo impostandolo su safety shield
2. Se la luce di indicazione è bianca significa che il sistema anticollisione è attivo  
Se compare la scritta "no sensor indication" è necessario riposizionare l'accessorio più in alto regolando le staffe.

**FR****ATTENTION!**

Pour le correct fonctionnement du système anti collision (safety shield) suivre ces passages:

1. après avoir installé l'accessoire contrôler le ordinateur embarqué en le réglant sûr safety shield
2. Si l'indicateur est blanc le système anti collision fonctionne correctement  
Si l'écrite "no sensor indication" comparais il faut re positionner l'accessoire plus en haut en ajustant les pattes de fixation.

Date Data Date	Item Code Cod. Articolo Réf. Article	Vehicle model Modello Veicolo Modèle de Voiture
03/02/2016	EC/SB/400/IX	NISSAN NP300 NAVARA 2016

Document checked and approved by  
Documento controllato ed approvato da  
Document contrôlé et approuvé par

**BOTTA PIETRO**